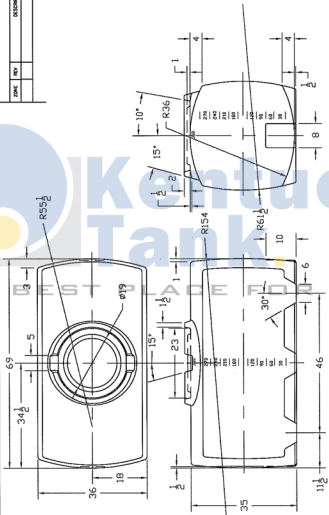


REVISIONS		DATE	APPROVED
DATE	REV		
DESCRIPTION			



- 34 — 31 3/4
- 30 — 28 7/16
- 26 13/16 — 25 1/4
- 23 11/16 — 22 3/16
- 20 5/8 — 19 1/8
- 17 5/8 — 16 1/8
- 14 9/16 — 13
- 11 1/2 — 9 15/16
- 8 3/8 — 6 3/4
- 5 3/16 — 3 7/16
- 0

NOTE: GALLON MARKERS ONE END & ONE SIDE

NORWESCO
ST. BONIFACIUS, MN

300 GALLON PCO TANK

SIZE / FROM NO.	END NO.	REV
NTP 13SEP01 B		
DATE 7/16		SHEET